

Back Pain - Is it Serious?

- Symptoms
 - Night Pain
 - Duration
 - Onset
 - Location
 - Is it affecting activities
 - Alleviating and Aggravating Activities

CookChildren's.

Back Pain - Is it Serious?

- Symptoms
 - Bowel or Bladder
 - Neurologic
- Stresses - associated Family Factors

CookChildren's.

Back Pain - Is it Serious?

- Constitutional Symptoms
 - Fever
 - Weight Loss
 - Night Sweats

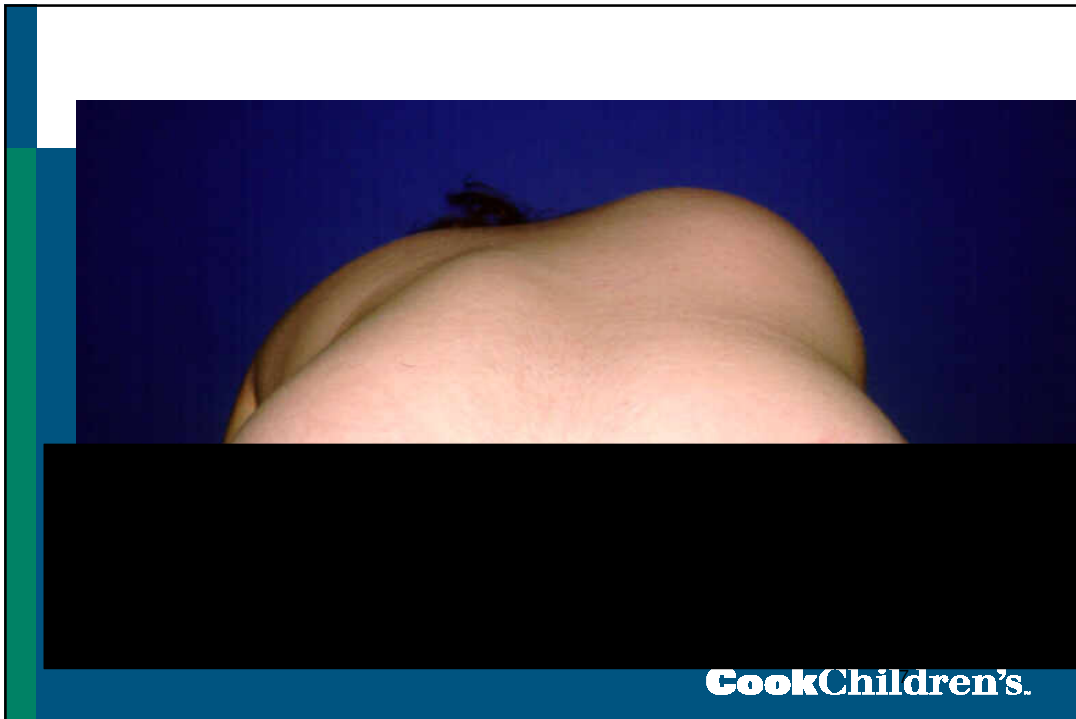
CookChildren's.

Spine Examination

- Observation
 - Postural Shift
 - Walking
- Range of Motion
 - Forward Bending
 - Extension
- Spine Symmetry
- Rib Rotation especially on Forward Bending
- Limb Length
- Shoulder Height
- Skin lesions

CookChildren's.





Spine Examination

- Straight Leg Raise
- Contralateral Straight Leg Raise
- Faber Test

CookChildren's.

Spine Examination

- Motor
- Sensory
- Proprioception
- Toe Walk
- Heel Walk
- Abdominal Reflexes
- Reflexes

CookChildren's.

Spine Examination

- Neurologic Examination
 - C5 - Deltoid; Biceps reflex; Lateral upper arm sensation
 - C6 - Wrist Extension; Brachioradialis reflex; Lateral forearm sensation
 - C7 - Wrist Flexion; Triceps reflex; Middle finger sensation
 - C8 - Finger Flexion; Medial Forearm Sensation
 - T1 - Finger interosseous (finger abduction); Medial upper arm sensation

CookChildren's.

Spine Examination

- Neurologic Examination
 - L1,2,3- Hip flexion
 - L2,3,4 - Quadriceps or knee extension
 - L4 - Ankle Extension tibialis anterior; patellar reflex; Sensation medial foot and medial lower leg
 - L5- Toe Extension; Sensation dorsum of foot
 - S1-Ankle Eversion by peroneals; Achilles reflex; Sensation lateral foot

CookChildren's.