

***ASSESSMENT SKILLS OF THE UPPER  
EXTREMITY ON THE  
FIELD AND CLINIC***

Matthew Mayfield, MD

July 10, 2012

**Cook**Children's.

***ASSESSMENT SKILLS OF THE UPPER  
EXTREMITY ON THE  
FIELD AND CLINIC***

- **ASSESSMENT**
  - ANATOMY
  - PHYSICAL EXAMINATION
  - FOCUSED INJURY ASSESSMENT
- **TREATMENT OF  
COMMON INJURIES**
  - ICE
  - WRAPS/SPLINTS
  - REFERRAL

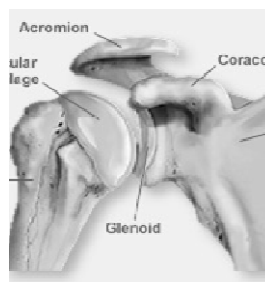


# ***ASSESSMENT SKILLS OF THE UPPER EXTREMITY ON THE FIELD AND CLINIC***

- **ASSESSMENT**

- **ANATOMY**

- SHOULDER
- ELBOW
- WRIST
- HAND

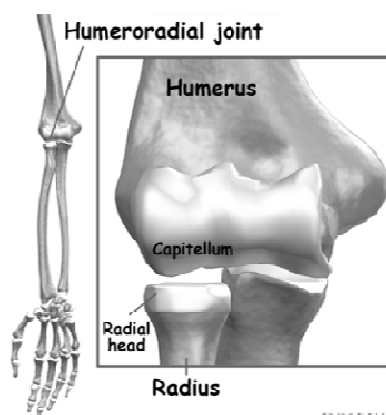


# ***ASSESSMENT SKILLS OF THE UPPER EXTREMITY ON THE FIELD AND CLINIC***

- **ASSESSMENT**

- **ANATOMY**

- SHOULDER
- ELBOW
- WRIST
- HAND



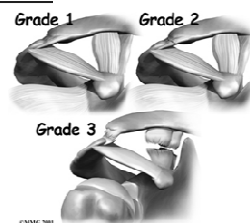
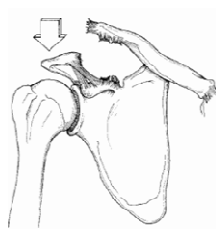
***ASSESSMENT SKILLS OF THE UPPER  
EXTREMITY ON THE  
FIELD AND CLINIC***

- ASSESSMENT
  - ANATOMY
    - SHOULDER
    - ELBOW
    - WRIST
    - HAND



***ASSESSMENT SKILLS OF THE UPPER  
EXTREMITY ON THE  
FIELD AND CLINIC***

- ASSESSMENT
  - PHYSICAL EXAMINATION (IN THE CLINIC)
    - INSPECTION
    - PALPATION
    - ROM
    - STRENGTH
    - NEUROVASCULAR EXAM



***ASSESSMENT SKILLS OF THE UPPER  
EXTREMITY ON THE  
FIELD AND CLINIC***

- **ASSESSMENT**

- PHYSICAL EXAMINATION (ON THE FIELD)
  - INSPECTION
  - PALPATION
  - NEUROVASCULAR EXAM
  - ROM
  - STRENGTH



***ASSESSMENT SKILLS OF THE UPPER  
EXTREMITY ON THE  
FIELD AND CLINIC***

- **ASSESSMENT**

- FOCUSED INJURY
  - OPEN WOUNDS
  - DISLOCATIONS
    - WHEN TO REDUCE?
  - NEUROVASCULAR EXAM
    - DETERMINES ACUITY



***ASSESSMENT SKILLS OF THE UPPER  
EXTREMITY ON THE  
FIELD AND CLINIC***

- **ASSESSMENT**

- FOCUSED INJURY
  - OPEN WOUNDS
  - DISLOCATIONS
    - WHEN TO REDUCE?
- NEUROVASCULAR EXAM
  - DETERMINES ACUITY



***ASSESSMENT SKILLS OF THE UPPER  
EXTREMITY ON THE  
FIELD AND CLINIC***

- **ASSESSMENT**

- FOCUSED INJURY
  - OPEN WOUNDS
  - DISLOCATIONS
    - WHEN TO REDUCE?
- NEUROVASCULAR EXAM
  - DETERMINES ACUITY

***ASSESSMENT SKILLS OF THE UPPER  
EXTREMITY ON THE  
FIELD AND CLINIC***

- TREATMENT OF  
COMMON INJURIES
  - ICE (RICE)
  - SPLINTS
  - REFERRAL



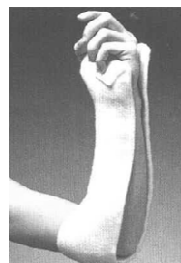
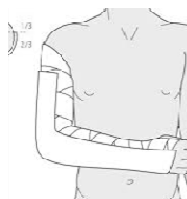
***ASSESSMENT SKILLS OF THE UPPER  
EXTREMITY ON THE  
FIELD AND CLINIC***

- TREATMENT OF  
COMMON INJURIES
  - ICE (RICE)
  - SPLINTS
  - REFERRAL



***ASSESSMENT SKILLS OF THE UPPER  
EXTREMITY ON THE  
FIELD AND CLINIC***

- TREATMENT OF  
COMMON INJURIES
  - ICE (RICE)
  - SPLINTS
  - REFERRAL



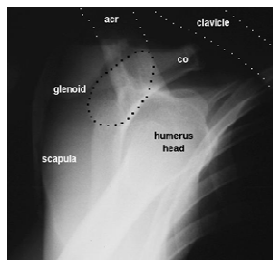
***ASSESSMENT SKILLS OF THE UPPER  
EXTREMITY ON THE  
FIELD AND CLINIC***

- TREATMENT OF  
COMMON INJURIES
  - ICE (RICE)
  - SPLINTS
  - REFERRAL
    - EMERGENCY VS.  
DOCTORS OFFICE VS.  
TRAINING ROOM



***ASSESSMENT SKILLS OF THE UPPER  
EXTREMITY ON THE  
FIELD AND CLINIC***

- Dislocations
  - Shoulder
    - Anterior vs.  
Posterior
  - Elbow
  - Hand



***ASSESSMENT SKILLS OF THE UPPER  
EXTREMITY ON THE  
FIELD AND CLINIC***

- Dislocations
  - Shoulder
    - Anterior vs.  
Posterior
  - Elbow
  - Hand





***ASSESSMENT SKILLS OF THE UPPER  
EXTREMITY ON THE  
FIELD AND CLINIC***

- Dislocations
  - Shoulder
    - Anterior vs. Posterior
  - Elbow
  - Hand



***ASSESSMENT SKILLS OF THE UPPER  
EXTREMITY ON THE  
FIELD AND CLINIC***

- FRACTURES
  - PROXIMAL HUMERUS
  - ‘ELBOW’
    - SUPRACONDYLAR
    - LATERAL CONDYLE
    - RADIAL NECK
  - FOREARM/WRIST
  - HAND



***ASSESSMENT SKILLS OF THE UPPER  
EXTREMITY ON THE  
FIELD AND CLINIC***

- FRACTURES
  - PROXIMAL HUMERUS
  - 'ELBOW'
    - SUPRACONDYLAR
    - LATERAL CONDYLE
    - RADIAL NECK
  - FOREARM/WRIST
  - HAND



***ASSESSMENT SKILLS OF THE UPPER  
EXTREMITY ON THE  
FIELD AND CLINIC***

- FRACTURES
  - PROXIMAL HUMERUS
  - 'ELBOW'
    - SUPRACONDYLAR
    - LATERAL CONDYLE
    - RADIAL NECK
  - FOREARM/WRIST
  - HAND



***ASSESSMENT SKILLS OF THE UPPER  
EXTREMITY ON THE  
FIELD AND CLINIC***

- FRACTURES
  - PROXIMAL HUMERUS
  - 'ELBOW'
    - SUPRACONDYLAR
    - LATERAL CONDYLE
    - RADIAL NECK
  - FOREARM/WRIST
  - HAND



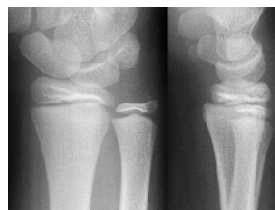
***ASSESSMENT SKILLS OF THE UPPER  
EXTREMITY ON THE  
FIELD AND CLINIC***

- FRACTURES
  - PROXIMAL HUMERUS
  - 'ELBOW'
    - SUPRACONDYLAR
    - LATERAL CONDYLE
    - RADIAL NECK
  - FOREARM/WRIST
  - HAND



**ASSESSMENT SKILLS OF THE UPPER  
EXTREMITY ON THE  
FIELD AND CLINIC**

- FRACTURES
  - PROXIMAL HUMERUS
  - 'ELBOW'
    - SUPRACONDYLAR
    - LATERAL CONDYLE
    - RADIAL NECK
  - FOREARM/WRIST
  - HAND



**ASSESSMENT SKILLS OF THE UPPER  
EXTREMITY ON THE  
FIELD AND CLINIC**

- FRACTURES
  - PROXIMAL HUMERUS
  - 'ELBOW'
    - SUPRACONDYLAR
    - LATERAL CONDYLE
    - RADIAL NECK
  - FOREARM/WRIST
  - HAND



THANK YOU