



Cook Children's Heart Center Fetal Echocardiography program

For referrals to Cook Children's Echo Lab, please contact:
Cook Children's Echo Lab
 801 7th Ave.
 Fort Worth, TX 76104
 682-885-4195 phone
 682-885-4164 fax

Our fetal echocardiography program led by Medical Director Lisa Roten, M.D., takes care of the tiniest hearts before they are even born.

Our team works to give multidisciplinary care to the expectant mother by providing the fetal echocardiogram, diagnosis and counseling during the initial visit. Birth and treatment plans are developed by a team of specialists that include perinatologists, neonatologists, cardiologists and cardiothoracic surgeons. This team approach involves the parents every step of the way, helping them understand the diagnosis, ask questions and make informed decisions.

If a congenital heart defect is present or suspected with either parent, the team often involves the adult congenital heart physician to ensure the parent gets the care that he or she needs.

Reasons to refer a patient for a fetal echo can include:

- A sibling or other family member has a diagnosis of a heart defect or certain heart disease.
- A routine pregnancy ultrasound detected an abnormal heart rhythm or possible heart problems in the unborn baby.
- The mother has type I diabetes, lupus or phenylketonuria.
- The mother has or had an infection that caused concern.
- The mother used certain medicines that had the potential to damage the baby's developing heart.
- A Harmony test or amniocentesis revealed a chromosome disorder.
- In vitro fertilization
- Cardiomegaly

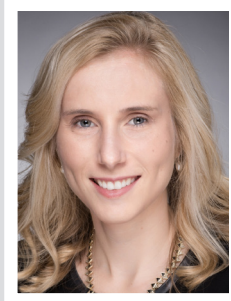
This program's staff is proud of maintaining accreditation in fetal echocardiography from the Intersocietal Accreditation Commission.



Fetal echocardiography team



Lisa Roten, M.D.
 Medical Director, Echo Lab
 Fetal Cardiologist



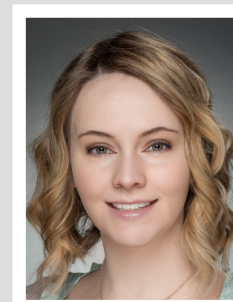
Kris Woldu, M.D.
 Fetal Cardiologist



**Becky Davis, BSDMS,
 RDCS, PE, AE, FE**
 Supervisor, Echo Lab



Leslee Hoff, RDGS, PE
 Fetal Echocardiography



**Melissa Hightower,
 BSN, RN, CCE**
 Fetal Nurse Coordinator